

# Electric Heat Kit Installation Manual

## Indoor Unit

### MODELS:

ENVBR24HPJ11B  
ENVBR36HPJ11B  
ENVBR48HPJ11B  
ENVBR60HPJ11B

Thank you for choosing our product.

Please read this Quick Start Guide carefully before operation and retain it for future reference.

If you have lost the Quick Start Guide, please contact the local agent or visit [www.borealsplits.com](http://www.borealsplits.com) or send email to [info@borealsplits.com](mailto:info@borealsplits.com) for electronic version.



### **ATTENTION INSTALLING PERSONNEL**

Prior to installation, thoroughly familiarize yourself with this Installation Manual. Observe all safety warnings. During installation or repair, caution is to be observed  
It is your responsibility to install the product safely and to educate the customer on its safe use

## CAUTIONS

- ENSURE THAT ALL POWER IS DISCONNECTED PRIOR TO ATTEMPTING INSTALLATION OF THIS HEATER KIT. THERE MAY BE MORE THAN ONE DISCONNECT SERVICING THE UNIT.
- REMOVE LINE VOLTAGE FROM L1 and L2 TERMINALS IN THE CONTROL BOX. FAILURE TO DO SO CAN RESULT IN FIRE.
- A MEANS OF STRAIN RELIEF AND CONDUCTOR PROTECTION MUST BE PROVIDED AT THE SUPPLY WIRE ENTRANCE INTO CABINET.
- USE COPPER CONDUCTORS ONLY
- INSTALLATION MUST FOLLOW NATIONAL ELECTRIC CODE AND OTHER APPLICABLE CODES

IF THIS APPLIANCE IS INSTALLED IN AN ENCLOSED AREA SUCH AS A GARAGE OR UTILITY ROOM WITH ANY CARBON MONOXIDE PRODUCING APPLIANCE, ENSURE THE AREA IS PROPERLY VENTILATED

1. Remove the front panel and upper access panel from the air handler.



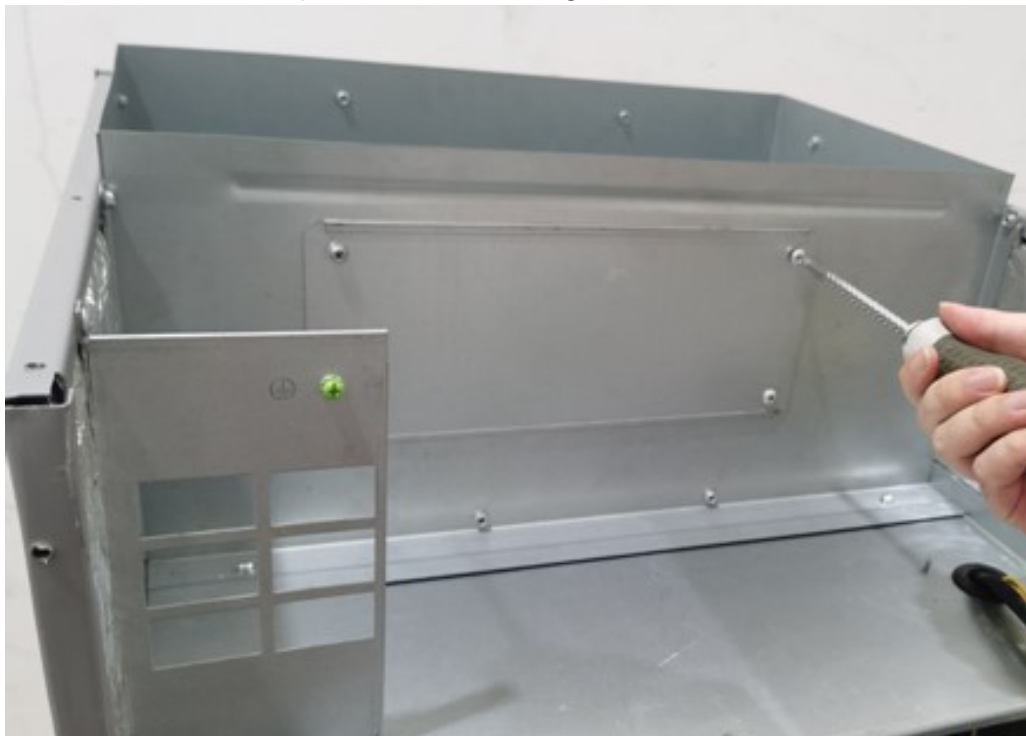
2. Disassemble the electrical box.



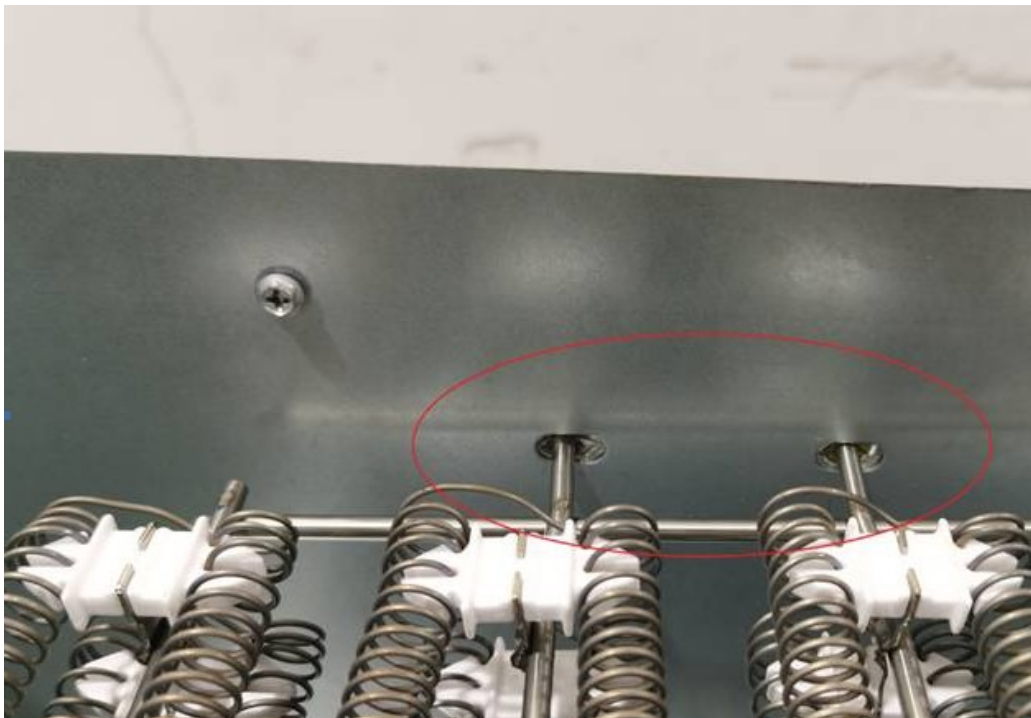
3. Remove the electrical box



4. Disassemble the metal plate at the mounting hole of the electric heater



5. Install the electric heater to the metal plate position which disassembles in step 4. (Notes: There are two holes circled below which are used to fasten the electric heater bracket during installation)



6. Install breaker (Notes: When installation, you need to lift up the buckle first, hold the breaker bracket and then put down the buckle to fix the breaker)



7. Disconnect line voltage from L1 and L2 terminals in control box if applicable. Connect the electric heater moxex plug.



8. After installation, the schematic diagram is as follows:



9. Install the electrical box back to the original position

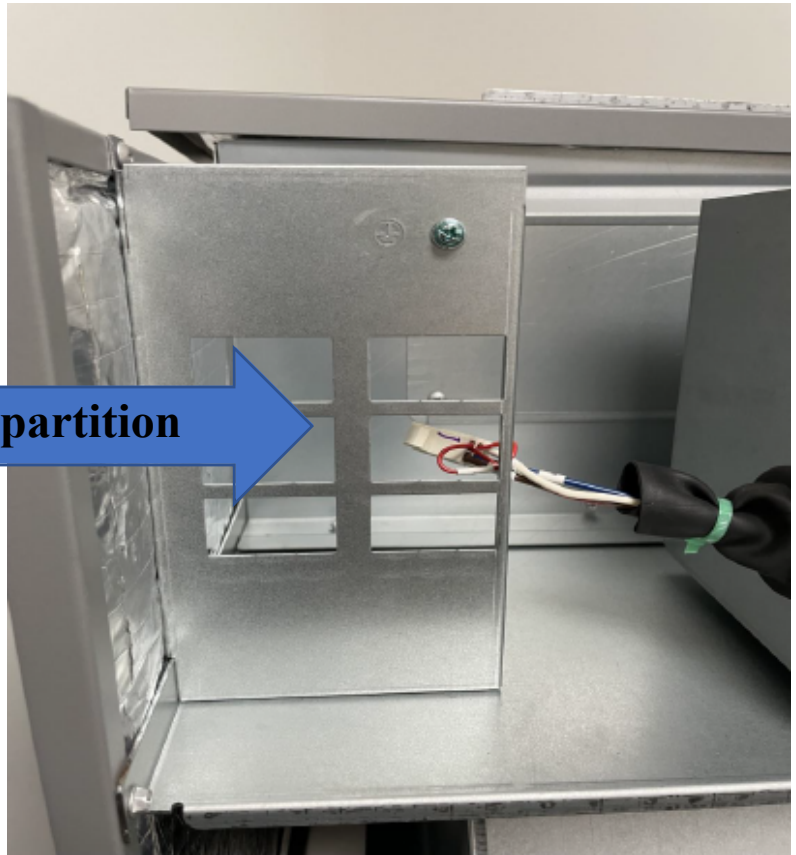


10. Install the front panel and upper panel back to the air handler. Electric heater installation is completed.



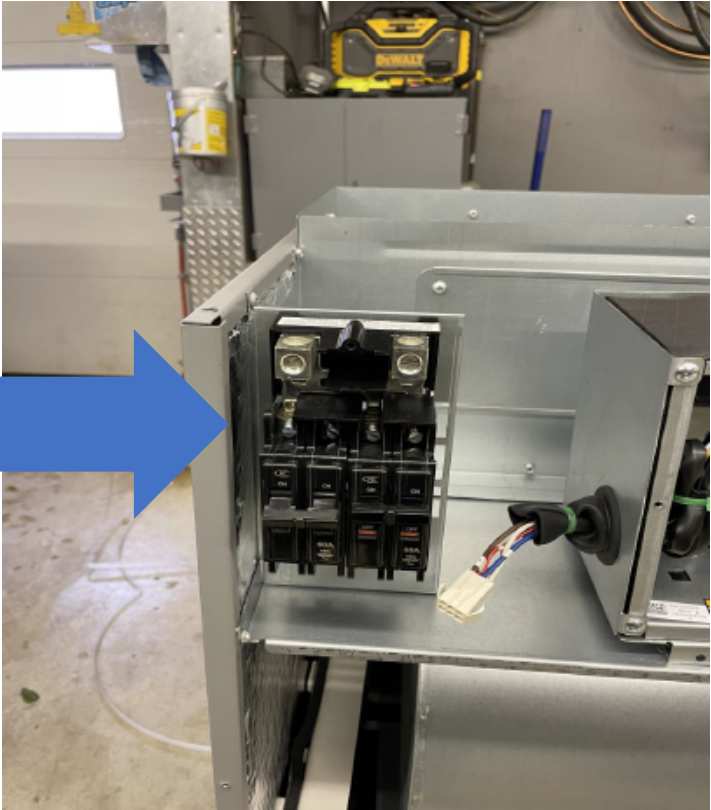
# Single Point Wiring Kit Installation

**Remove this middle partition**



# Single Point Wiring Kit Installation

Attach single point kit



# Single Point Wiring Kit Installation

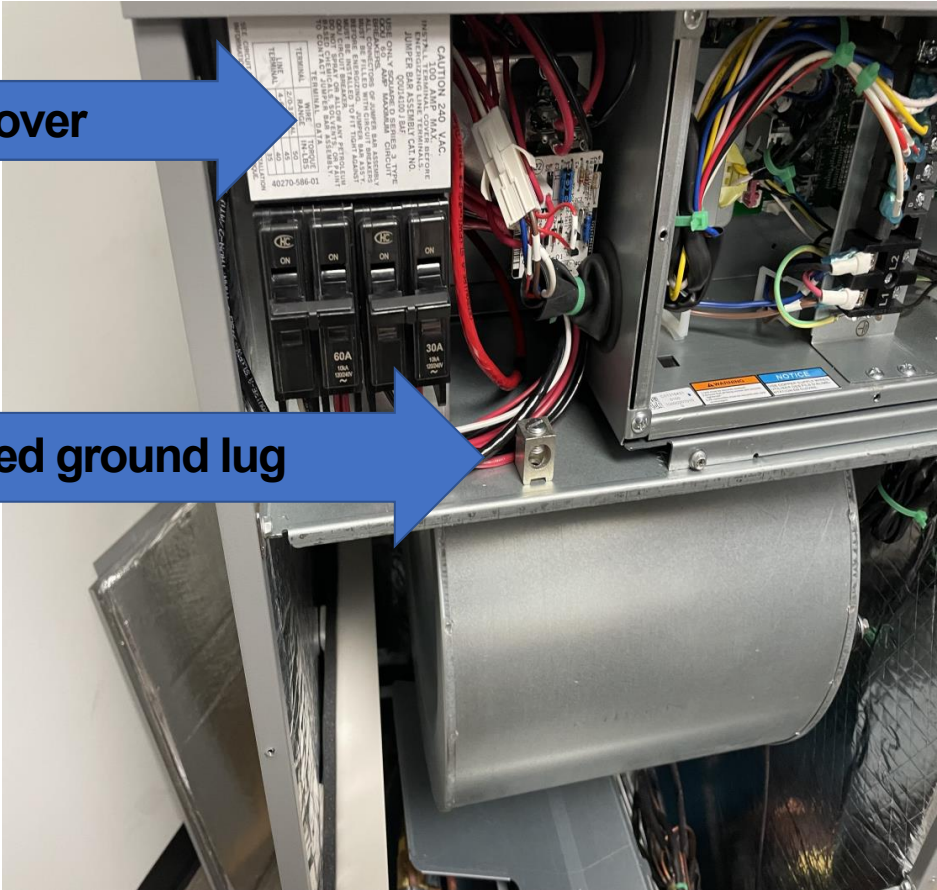
Connect properly sized wire to lugs as shown



# Single Point Wiring Kit Installation

Reinstall safety cover

Add field-supplied ground lug



## Electric Heater Kits

Model	Cooling capacity(ton)	Optional electric heater	
ENVBR24, 36	2.0 / 3.0	ENERMAXXHTR5KW	5
ENVBR24, 36	2.0 / 3.0	ENERMAXXHTR8KW	8
ENVBR36, 48, 60	3.0 / 4.0 / 5.0	ENERMAXXHTR10KW	10
ENVBR36, 48, 60	3.0 / 4.0 / 5.0	ENERMAXXHTR15KW	15
ENVBR48, 60	4.0 / 5.0	ENERMAXXHTR20KW	20

**boreal**

**Air Conditioning**

U.S. CONTACT INFORMATION

TRADEWINDS CLIMATE SYSTEMS, LLC.

E-mail: [info@borealsplits.com](mailto:info@borealsplits.com)

[BOREALSPLITS.COM](http://BOREALSPLITS.COM)